
Network Transfer System

Manual

© Copyright 2009

PLRElectronics

PLRElectronics

© 2008 PLRElectronics

PO BOX 11977

Fort Worth, Texas

All rights reserved. No part of this manual may be reproduced, transmitted, or viewed in any form or by any means without permission in writing by its publisher.

Version 1.2C

Table of Contents

About this document	4
About this document	4
Trademark and Copyright information	5
Trademark and Copyright information	5
Forward	6
Summarization	6
Copyright Declaration	6
End-user license agreements	6
Copyrights and properties of this program.....	6
You agree not to:	6
Disclaimer:	7
License termination:	7
Installation and Uninstallation.....	8
Running Environment	8
Installation:	8
Uninstallation:.....	8
General Usage Instructions.....	9
General Usage.....	9
Connection.....	17
Network	17
Network Driver.....	17
Connection Diagram	17

About this document

About this document

This document is to be used as a reference user's manual for the network transfer system.


We highly encourage you to completely review the entire contents of this manual before installing or using your device.

To download a copy of this manual at anytime, please go to:

http://www.plrelectronics.com/PLRELECTRONICS_Network_System.pdf

Trademark and Copyright information

Trademark and Copyright information

 is a registered trademark of PLRElectronics. The copyright of all parts of this product belong to PLRElectronics. Any imitation, copy or translated transcripts shall be prohibited. You are requested to read these instructions carefully before using this product. All content and legends used in this user's manual are for explaining the basic operations and usage. We reserve the right to changing, modifying, or upgrading without prior notice. Please refer to our website: <http://www.PLRElectronics.com> for more information when applicable.

Forward

Summarization

With the continued progress of computer science technology, the floppy drive has become an outdated technology. Undoubtedly, the floppy drive will soon be eliminated due to its small storage, short life span, and fast development and popularization of USB standards. For most industry computerized equipments which are still equipped with floppy drives as the only or the main data input device, the most effective method to continue usage in future is to utilize USB or network data transferring. PLRElectronics now offers the USB.NET Simulating Floppy Drive combined with the Network Transfer System which can offer solutions for older outdated equipment. By simply installing a SFDR device in replacement to the original floppy drive, you will be able to store and transfer data with a USB flash stick or directly through the network.

Copyright Declaration

This software is distributed by PLRElectronics. All individuals and organizations are not permitted to duplicate or modify software content and packing without official authorization from us. The software is protected by copyright laws and international treaties. Any illegal action of duplication or distribution of this software (or any portion thereof) may be criminally and civilly sued and punished at the maximum level.

End-user license agreements

PLRElectronics is authorizing you license use on the basis that you will not copy, modify, lease or transfer this system or any portion thereof out of the above stipulated terms and conditions.

Copyrights and properties of this program

This program and all duplicate names coexist with the marked company in this disk or this program. Copyright of this program and the archives are protected by national copyright law and international treaties. You are not permitted to erase the copyright declaration from this software

End user agreement:

1. To use this system only on one piece of equipment.
2. Transferring the licensed agreement to a third party requires that you must transfer the original archives and all their associated archives at the same time and destroy any remaining copies.
3. Only in the following events may this system be allowed to apply to multi-user environments or network system:
This system explicitly permits;
Or each node or terminal has already purchased a license.

You agree not to:

1. Resale the license of this system.
2. Attempt to reverse engineering or disassemble this system.
3. Duplicate or alienate this system or portion thereof beyond the stipulated terms and conditions within this agreement.
When you alienate all or any portion of this system or third party copies, your license will automatically cease.

After sales warranty:

We guarantee, in normal use, there will be no defects in our software or workmanship within 180 days after sale. If validation proves that defects indeed exist, our responsibility is limited to replace the software system with a new system upon return of defective. The new device will continue to use the original warranty until it expires or 30-days, the longer of the two. Defects or damages resulting from accident, acts of God, and misuse are not included in our after sales warranty.

Disclaimer:

This system doesn't offer any other after sales warranty except those narrated above.

Responsibility limited:

The above declared items, no matter explicitly or implicitly referred, are the entirety of the warranty. Irrespective of you obeying this agreement or not, we will not be responsible for any of the below claims arising from use of this system: profit loss, availability loss, business termination, or any indirect, special, accidental or necessary damage in any form, or by any other party's claim. The claims are void and will not be handled even if we are informed in prior.

License termination:

If you violate any of the terms and conditions above, we reserve the right to terminate the license at any time; you must destroy and clear this program from your equipment including all archives and their copies or return them to us.

Applicable Laws:

Intellectual property protection Act
Copyright Laws, Patent Laws

Be sure you have read and fully understand this agreement, and agree to abide by each term and condition.

Installation and Uninstallation

Running Environment

Operation system:
Windows 95/98/2000/NT/ME and XP

The basic system requirements:
CPU: Pentium III 600 MHz
Memory: 128MB.
Display Card: SAGA, 256 color display mode or above.
Hard disk: Typical Install 20MB.

Recommended system configurations:
CPU: Pentium IV 1.0G or above
Memory: 256M or above
Display Card: SVGA, 16k color display mode or above

Software Installation:

Installation:

If your computer's "Autorun" function is active, you just need to load the software disk into the CD-ROM drive. Once the initial interface appears, click "Setup" and the computer will automatically implement the installation program.

If your computer's "Autorun" function is inactivated or the software installation does not load automatically, you should run the "Setup.EXE" under the root directory of the CD-ROM. Once the Setup program runs choose "Setup" to begin the setup process.

Uninstallation:

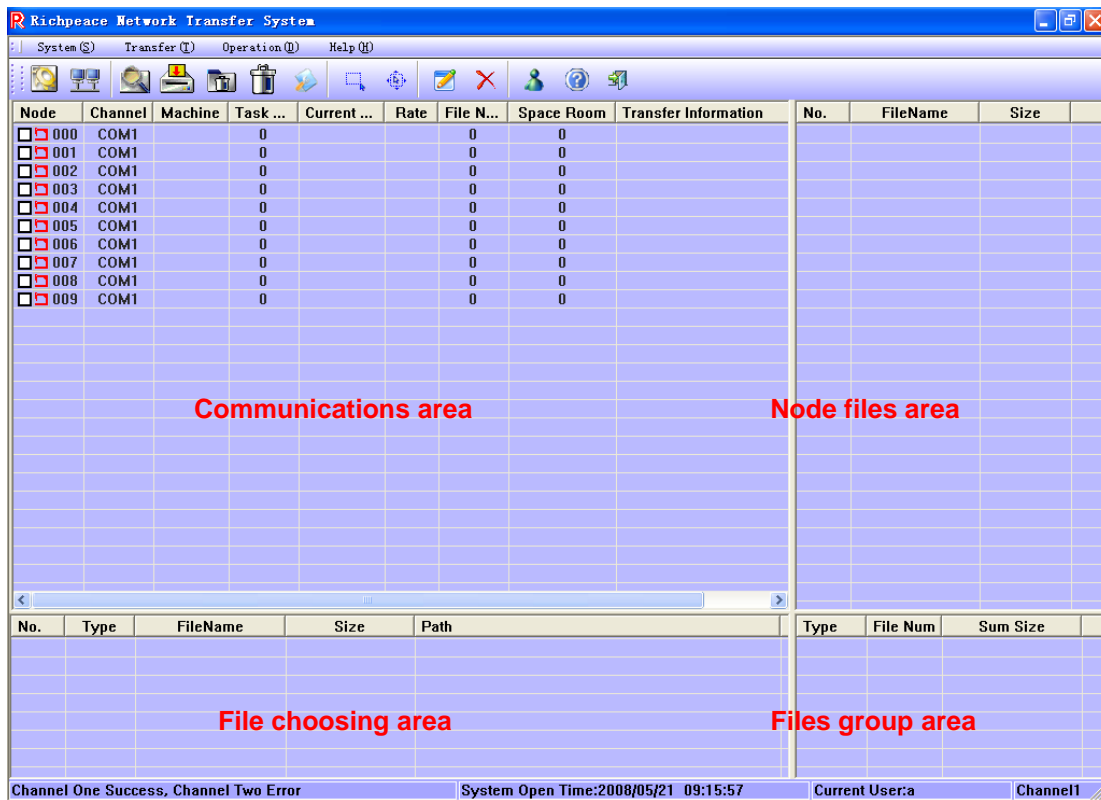
This software includes a self-uninstall feature. To uninstall this software, click "Start"/"Programs" and then "Network Soft" program group, and then click "RP_NPTS_ESH.exe" to run the Uninstall program. You may also use the uninstall feature provided with the installation program or, by using the Add and Remove feature from the Control Panel.

General Usage Instructions

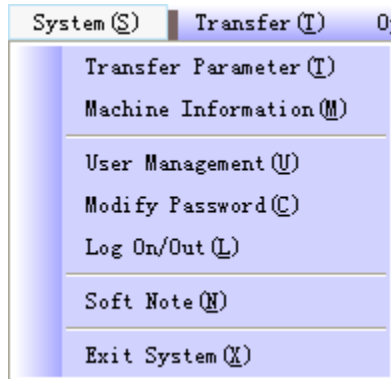
General Usage

The software consists of 7 general areas/windows: The main menu bar, tool bar, communications area, file choosing area, node files area, files group area, status bar.

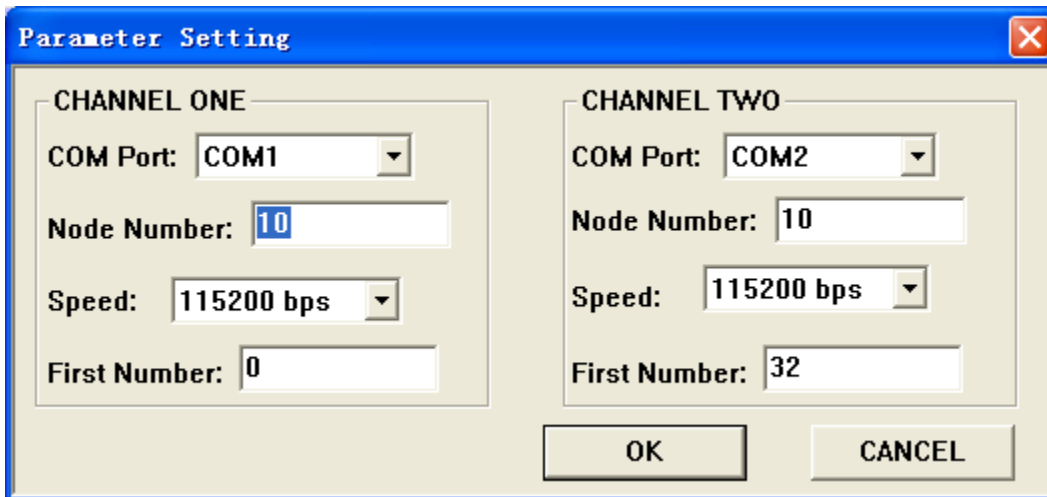
- (1) **The main menu bar:** Consists of the following areas: System, Transfer, Operation, and Help.
- (2) **Tool Bar:** Contains Browsing Features.
- (3) **Communications area:** Enumerates the information of every network node in the system.
- (4) **File choosing area:** Enumerate the file information. You can choose multi-files when you click and hold the Ctrl or Shift key.
- (5) **Node files area:** Used to turn off and on information display.
- (6) **Files group area:** Enumerate the files information.
- (7) **Status bar:** Displays channel status, the number of current selected files, current channel, and the current user.



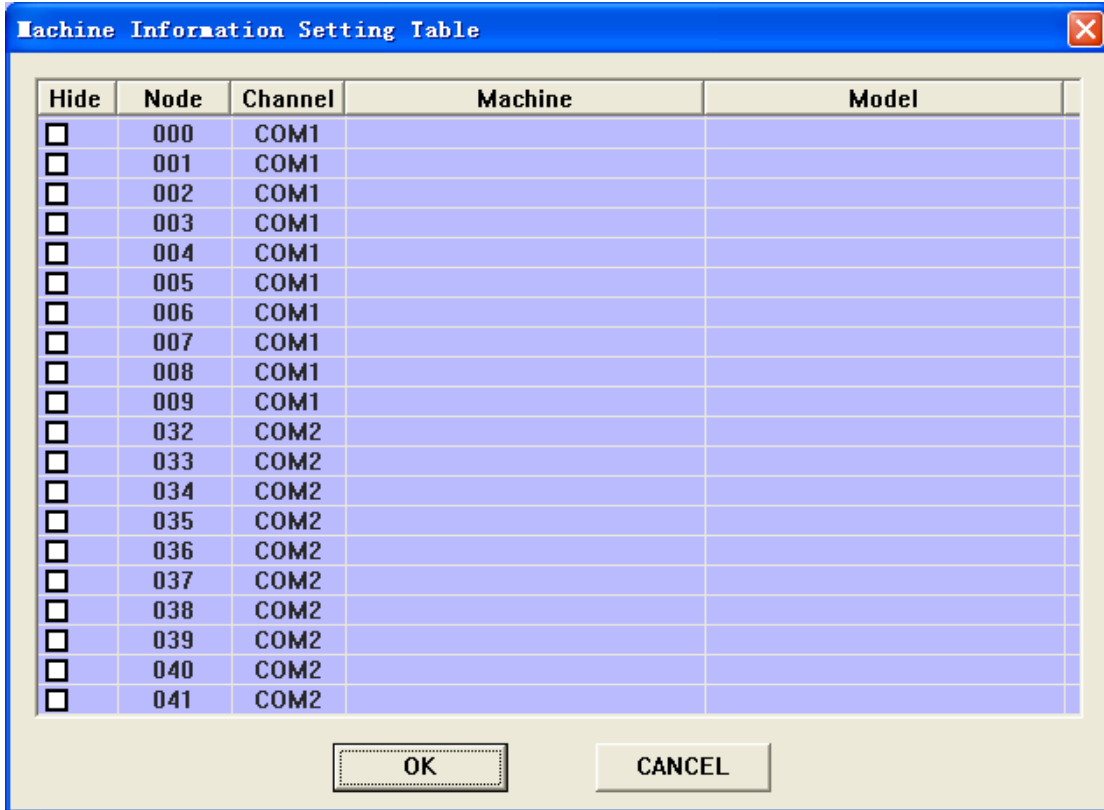
Main menu bar:



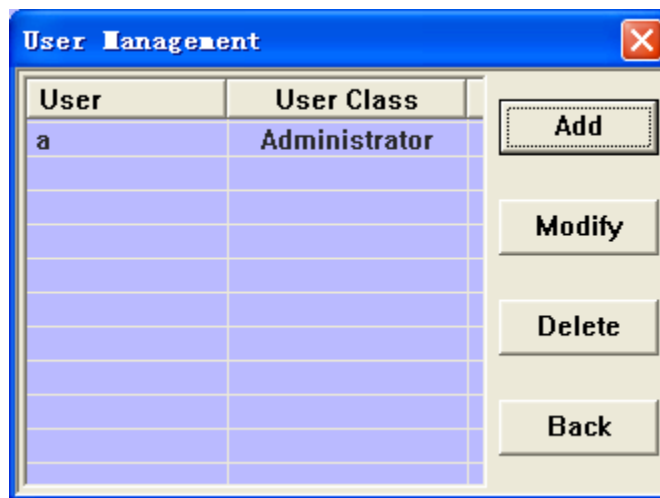
Channel setting: Dialog box used for setting the communications parameters.



Machine information: Shows the machine information setting table. Used to set and display machine information.



User's management: Used by Administrator to set users/privileges.



Add user: Used to add system administrator or user and privileges

Add User

Please Input:

User Name:

Password:

Confirm Password:

Right Setting

Administrator

Operator

Detail

OK CANCEL

The user's privileges are set by selecting each "right" accessible by the Details button

Right Setting

Cancel Task

Select File

Set System Parameter

Send File

View Soft Note

Delete File

Edit Machine Information

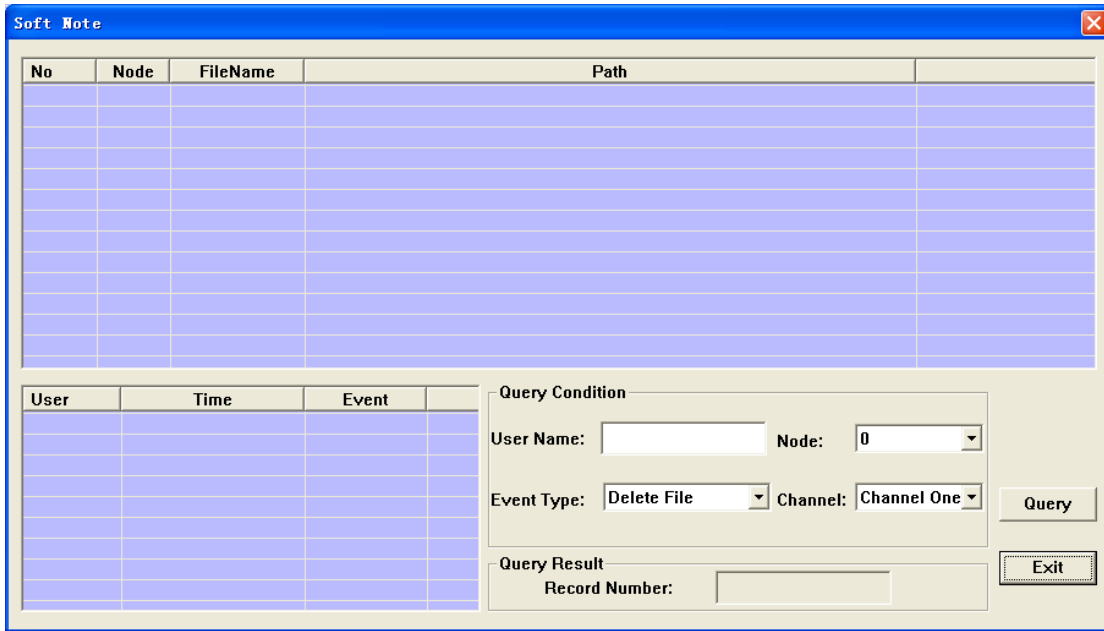
Change PassWord

Query Node Status

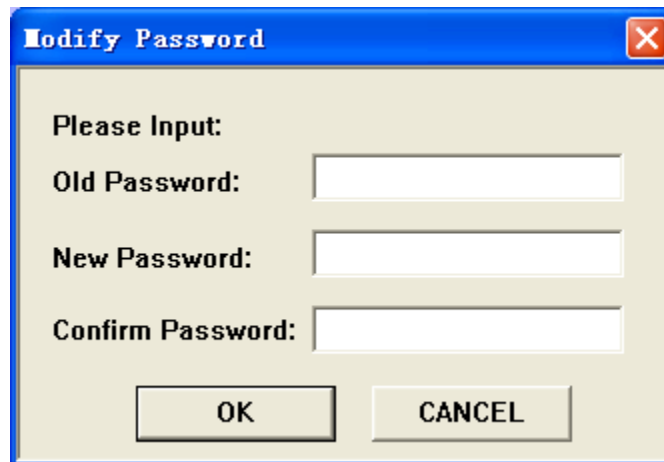
Close System

OK CANCEL

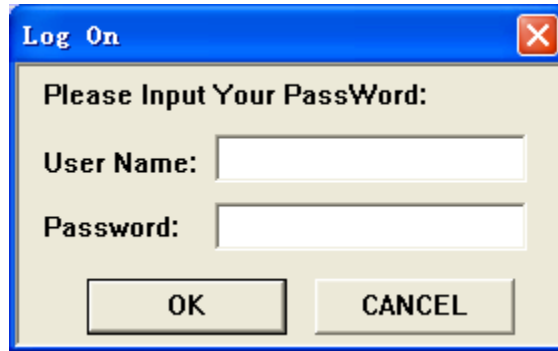
Software Log: Used to check the activities log.



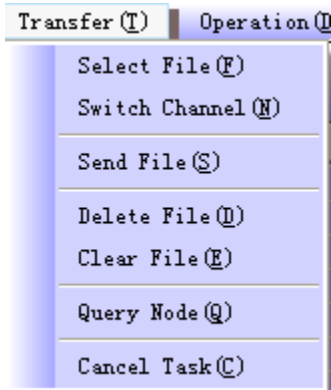
Modify password: To modify the current user’s password.



Log on: Click “Log on” to switch users.



Exit System: Click “Exit” to exit the program.



Select file: Click “Select File” to load the file

Switch channel: Click “Switch Channel”, can change the current channel.

Query information: Query machine state, file information, free space etc.

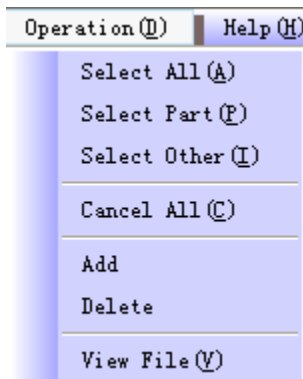
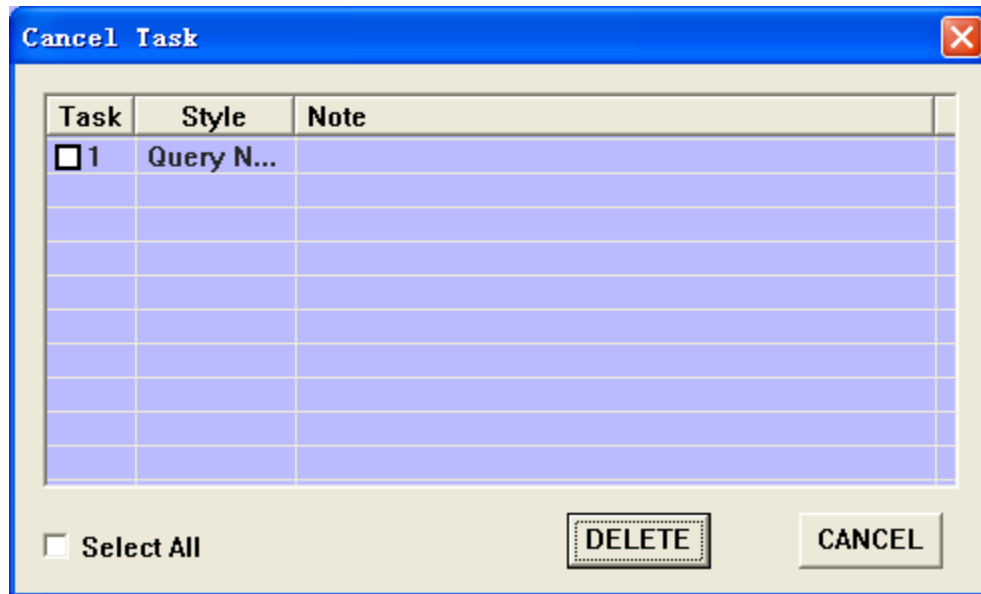
In the list of machines, each line indicates that a station corresponding to one machine. You can click on the check box to indicate that you chose this station, and then select from the menu of “Query”; A multiple number of stations can be queried.

Send file: Once the file is located, select which machines you would like to send the files to and then click Send File. You can select several machines at a time.

Delete file: Deletes the selected files.

Clear file: Will remove all files from the selected machines.

Cancel transfer: Cancels the send file command.



Select All: Selects all records in the communications area.

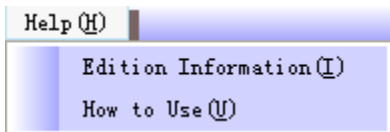
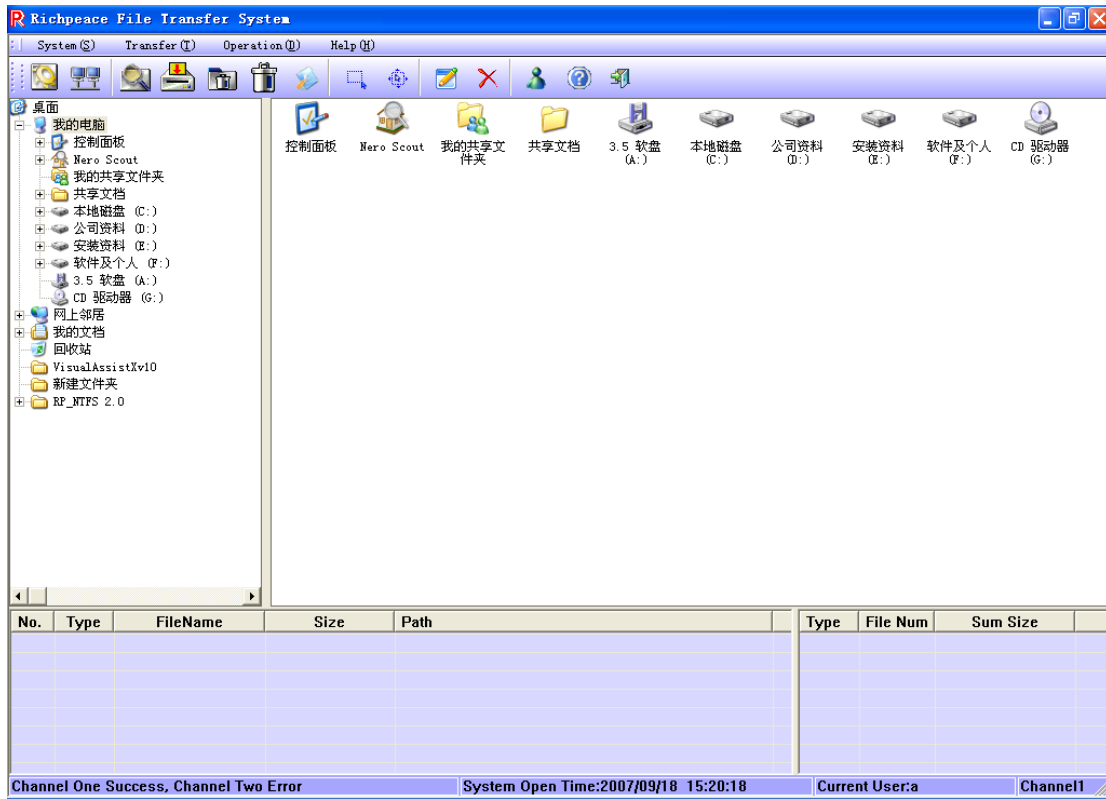
Select Part:

Select Other: Selects all unselected records

Cancel All: Cancels all selected records in the communications area.

Clear Selected files: Clears selection

Delete Selected Files: Deletes selected files



Edition Information: Edit information

How to use: Help

Connection

Network

Network Driver



Driver - One required per floppy disk drive. Each driver is connected together and then fed into the main computer com port or usb to com port.

Connection Diagram

