

**PC Card Resource Setting Utility
For
R5U241**

Release Note

Ver. 0.9 (beta version)

Jun.19.2008

**Electronic Devices Company
Ricoh Company Ltd.**

PC Card Resource Setting Utility for R5U241

Ricoh is developing the utility (filter driver) to work the Legacy PC Card correctly on the current PCI express chipset. This document shows the operation of the utility for your evaluation.

■ Purpose

This utility works as filter driver of PC Card Driver. It issues a request to allocate to 32-byte free disk space in [1000h-FFFFh] to change I/O access area where cannot access by the current PCI express chipset.

Note: This utility cannot guarantee to work all of legacy PC card.

■ Instructions

1. Unzip "RICOHFiltersetup.zip" onto your local hard disc. This zipfile consist of one file, "RICOHFiltersetup.exe"
2. Double Click "RICOHFiltersetup.exe" and click the install button to proceed with the installation. Follow the instructions provided by the installation program.
3. After you complete the installation, this utility starts automatically and it is shown in the taskbar. Please see the Fig.1.

Note: This utility is registered with a startup menu by installation. When you reboot the system, this utility starts automatically.

4. Insert the PC Card. If the PC Card is set into this utility at the first time, the PC Card is registered automatically and requests to reinsert the PC Card. Please see the Fig.2.

Note: Once the PC Card registered with this utility, reinsertion message is not shown.

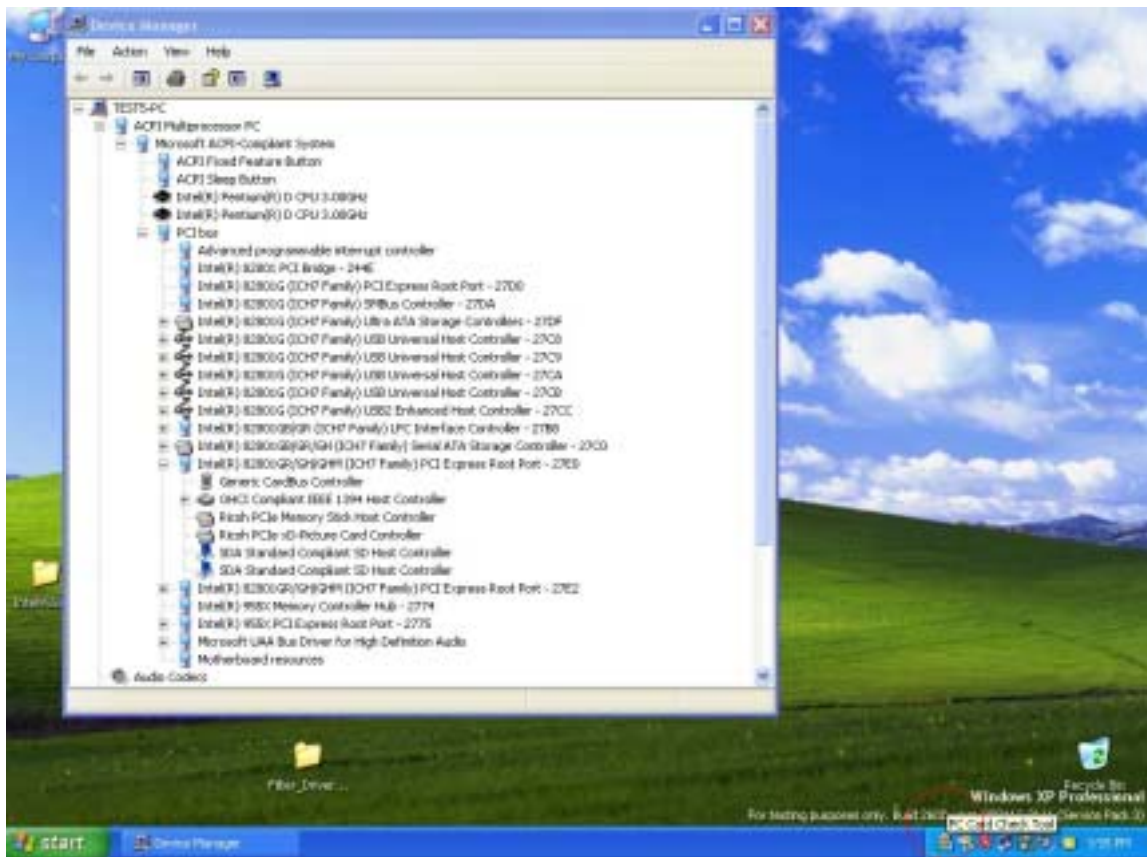


Fig.1

PC Card utility



Fig.2